

The Shire Flyer



Friday 01 September 2017

Creating Our Future

The Shire is seeking your input on whether the reviewed Strategic Community Plan captures the Esperance community's vision;

"The Esperance Community is vibrant, welcoming and supportive and values its social connections and natural landscape".

The reviewed Draft Strategic Community Plan 2017-2027 has been developed around five themes; Community Connections, Natural Environment, Built Environment, Growth & Prosperity and Community Leadership.

The community input received has been invaluable in updating the Plan to be reflective of our current community values and aspirations. Community goals were identified along with future challenges and opportunities during three months of engagement. The Plan has captured the thoughts and ideas put forward, and identifies strategies and outcomes that will work towards achieving these goals and vision.

The draft and all survey responses are available for the public to view on the Shire's website.

Please have a look at the Plan and if you wish to make a formal submission please send your thoughts by filling out the form on our website and emailing it to shire@esperance.wa.gov.au or dropping a hard copy in to the Shire.



Lake Monjingup Open Again

Lake Monjingup is now open again to all visitors, after work has been completed - just in time for wild flower season!

A new information shelter, a boot cleaning station to prevent the spread of dieback, picnic area and interpretive signage along the existing walk trails have all been installed. This adds to the 3000 seedlings planted in the area for National Tree Day. Why not head out and spend some time wandering around this natural asset.

The Environment Centre, a toilet and boardwalk will be coming soon and a formal opening ceremony will take place once this work is complete.

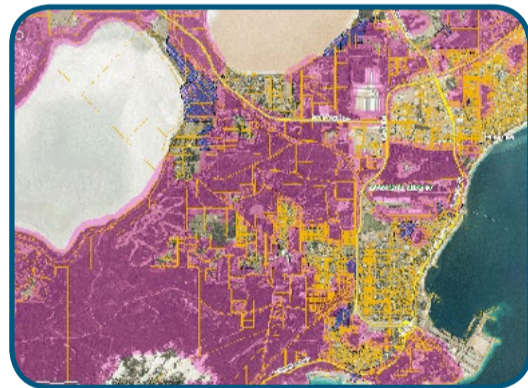


Upcoming Meetings

Agenda Briefing: 1pm, 19 September, Council Chambers
Ordinary Council Meeting: 4pm, 26 September, Council Chambers

Want to know what is happening in Council each month? The agenda includes all reports Council will make decisions on, minutes from Council and committee meetings, monthly financials and an operational report. To read the full the Agenda and Minutes please go to the Shire's website.

Bushfire Prone Mapping Update



The mapping of bush fire prone areas has been updated for the Esperance region. The Office of Bushfire Risk Management released an amendment to the Map of Bush Fire Prone Areas in July 2017 to rectify a data processing issue affecting some Esperance properties. The Map is used by land use planners and developers to inform the location and design of new development in bush fire prone areas. Residents can view the Map at www.dfes.wa.gov.au/bushfireproneareas. For more information, please refer to the FAQs on the map website or contact the Office on 08 6551 4060 or obrm@dfes.wa.gov.au.

Magpie Warning

It's that time of year where magpies may swoop to defend their offspring and nest if they feel threatened. The Shire will place signs around locations where swooping magpies are causing a nuisance to warn those passing by.

The best way to avoid being swooped is to avoid passing too close to trees containing nests and to never provoke a magpie by drawing attention to yourself or throwing objects. Head to the Department of Parks and Wildlife website for further information.



Learning about Rangers



This week Esperance Primary School students met our Rangers and learnt about staying safe in the community, responsible pet ownership, littering, safety around schools, sharks and the beach this summer. Looks like they had loads of fun, we even had to lock up a few!

Our Rangers actively educate the community on local issues and are involved in local community events. Rangers look after a broad area and are responsible for local and state law enforcement, coastal reserves patrols and maintenance and block inspections under the Bushfires Act.

Top Trainee

Congratulations to Shara-Lea Kiripatea who was awarded Trainee of the Year at the ECCI Business Excellence Awards for 2017. We always knew she was fabulous.

Shara-Lea is a trainee pool operator at the Bay of Isles Leisure Centre and some aspects of her job include lifeguarding and monitoring and maintaining the pool water quality.

There are often different traineeships available at the Shire, keep an eye out for when we are looking for our next trainee.

