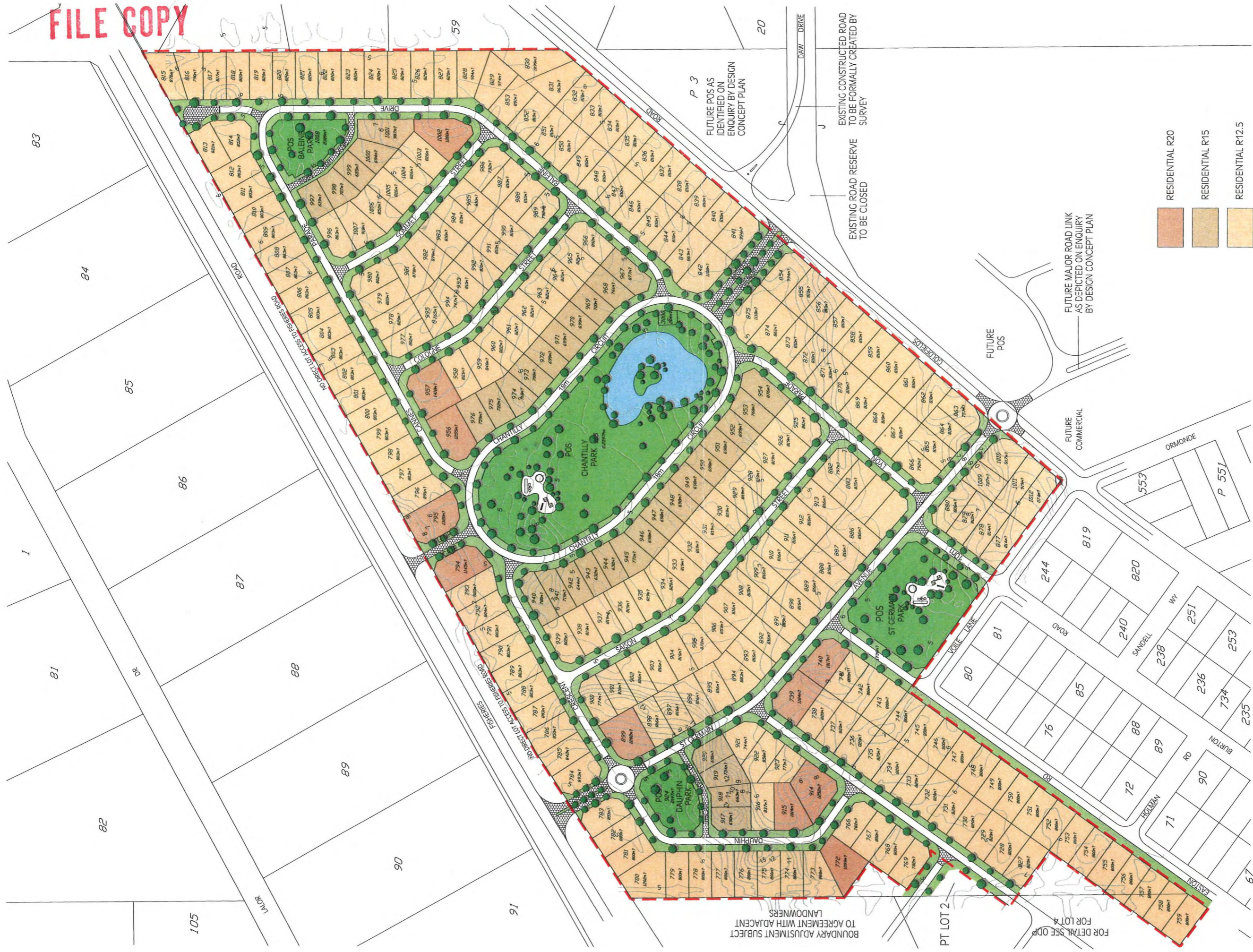


FILE COPY



RESIDENTIAL R20  
RESIDENTIAL R15  
RESIDENTIAL R12.5

**OUTLINE DEVELOPMENT PLAN**  
**LOT 2 FISHERIES ROAD AND GOLDFIELDS ROAD**  
**ESPERANCE**  
**FOR ANGLIO ESTATES PTY LTD**

NOTE  
 Site area 33.749ha  
 POS area 3.3718ha  
 All road reserve widths 20m unless otherwise shown  
 Distances and areas subject to survey  
 Road pavements indicative only  
 All lots R12.5 unless otherwise noted

**Final ODP Approved by Council:**  
**GRAY & LEWIS**  
 LAND USE PLANNERS  
 Suite 5, 2 Hardy Street  
 South Perth WA 6150  
 T (08) 9474 1172  
 F (08) 9474 1172  
 pertrn@graylewis.com.au

EC 99264\_ODP\_3

05 JUNE 2007

THIS DOCUMENT MAY ONLY BE USED FOR THE PURPOSE FOR WHICH IT WAS COMMISSIONED AND IN ACCORDANCE WITH THE TERMS OF ENGAGEMENT FOR THE COMMISSION LINKED TO THIS DOCUMENTARY FROM WHICH IT IS DERIVED.

**Subdivision Reference:**

**S122454**